

Tilt-up Precast Solutions

Engineered Concrete Manufacturing, Installation, Maintenance and Repair

EnCon Field Services, LLC, (EFS) is a division of the EnCon Companies. Started as a subcontractor to install prestressed/precast concrete panels and building systems, EFS is now a general contractor performing concrete structure repair, restoration, and maintenance programs, along with the manufacturing and installation of tilt-up concrete panel systems.



EFS builds on the success and experience of the EnCon family of companies. The core services of EFS Tilt-up offer the following advantages:

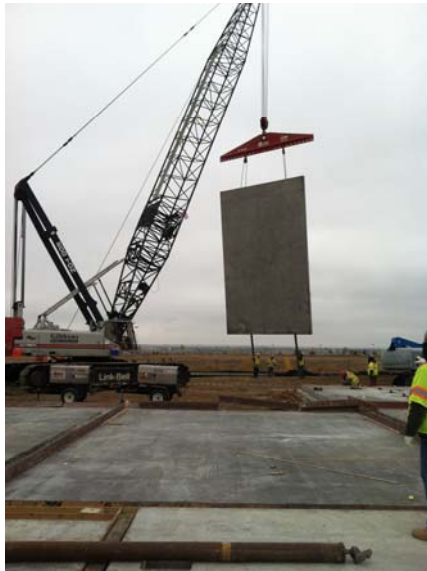
- Tilt-up precast concrete speed, economy and design opportunities
- Single source supplier for manufacturing, installation and maintenance work
- Tilt-up is quick to install. Typical installation is 7,000 – 13,000 ft² per day.
- Tilt-up panels are sustainable building components and limit environmental impact of building construction.
- Warranty period is included with all projects
- Experienced in assessment and repair of existing Tilt-up structures
- Staff brings significant experience from the precast concrete market



Tilt-up Precast Solutions

EnCon Field Services Tilt-up Panels Features:

- Rigid wall, large box structure or other panelized buildings
- Effective cost structure and time savings
- Cast on site, with some highly detailed or architectural panels being cast in a precast plant
- Forming, reinforcement, embeds, concrete placement and finishing work included
- High level of efficiency
- Durable with a long service life
- Low maintenance requirements
- Abundant design opportunities
- Rigid product tolerances
- Multiple textures and designs, including insulated walls, thin brick, and form liners
- Attention to detail and high level of product quality



EnCon Field Services specialties include:

- Structural evaluation and engineering
- Warranty maintenance program
- Project management through project completion
- Precast concrete and Tilt-up installation
- Onsite environment of knowledge, accountability and focus

