

Company Overview

EnCon Design, LLC specializes in the design and detailing of complex architectural and structural precast concrete projects and components. Our EOR services provide product knowledge of structural engineering and components, precast panel function, structural and architectural considerations, and integrated engineering. Our unique concept and staff expertise allow us to offer a full range of diverse services managed from the initial design stage through building completion. These EOR precast solutions provide product variation and geographical diversification, development of innovative product lines, use of certified precast products, and cutting-edge design techniques.

EnCon United Company entered the precast/prestressed concrete market in early 1993 with the acquisition of Stresscon Corporation. EnCon now owns and operates nine entities dedicated to the construction industry and serves customers in over 20 states through its manufacturing locations in Atlanta, Colorado Springs, Denver, Portland, and Seattle. EnCon United is headquartered in Denver, Colorado, which is also home to EnCon Construction, EnCon Design and EnCon Renew. As a certified producer member of the Precast/Prestressed Concrete Institute and an AltusGroup® Producer Member, EnCon is recognized among the leading precast companies in the United States.

EnCon is structured to deliver a broad range of products over a large geography. The cornerstone of our business philosophy is to provide exceptional service: before, during and after construction. EnCon continues to expand to meet the rising demand for precast/prestressed concrete products and services through cutting-edge design, innovative product options, and strategic corporate development. Given an opportunity of sufficient scope, EnCon will build new facilities to meet its customers' needs. The EnCon family of companies looks forward to increasing growth, leadership, and service to the construction industry.



ENCON UNITED

2140 S. Ivanhoe St. Ste. 100
Denver, CO 80222
303.298.1900

ATLANTA STRUCTURAL

80 DeHunt Drive
Buchanan, GA 30113
770.646.1888

ENCON COLORADO

8600 Welby Road
Denver, CO 80229
303.287.4312

ENCON CONSTRUCTION

2140 S. Ivanhoe St. Ste. 100
Denver, CO 80222
303.298.1900

ENCON DESIGN

2140 S. Ivanhoe St. Ste. 100
Denver, CO 80222
303.298.1900

ENCON FIELD SERVICES

2140 S. Ivanhoe St. Ste. 100
Denver, CO 80222
303.298.1900

ENCON NORTHWEST

1615 SE 6th Avenue
Camas, WA 98607
360.834.3459

ENCON RENEW

2140 S. Ivanhoe St. Ste. 100
Denver, CO 80222
303.298.1900

ENCON WASHINGTON

5415 - 189th Street E
Puyallup, WA 98375
253.846.2774

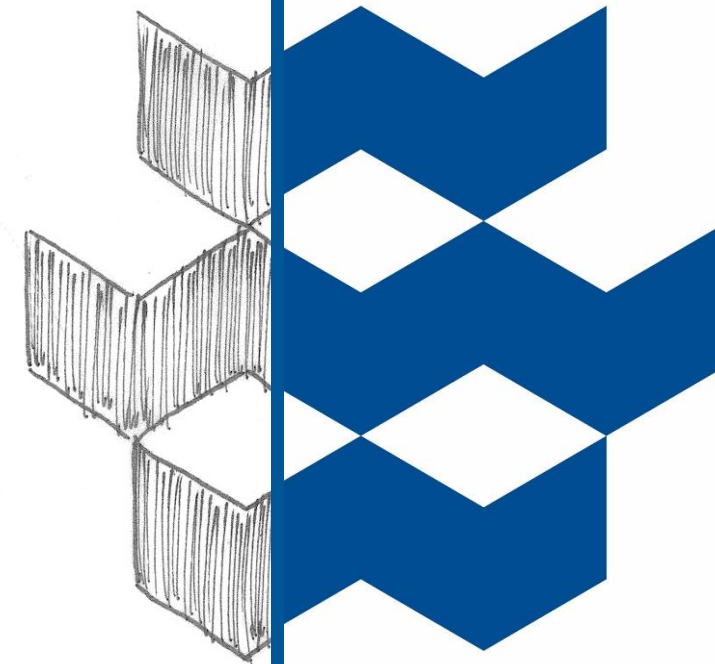
STRESSCON

3210 Astrozon Blvd.
Colorado Springs, CO 80910
719.390.5041

TPAC

3052 S. 19th Avenue
Phoenix, AZ 85009
602.262.1391

Specialized Engineering Solutions



Precast Concrete Design

The EnCon group of companies understands precast market segments and commits to deliver a standard in project distinction and customer satisfaction. When designing total precast structures or using precast components, commitment to deliver quality documentation, superior customer service, and value engineering provides endless design opportunities.

Design Markets

- Healthcare
- Industrial/Warehouse
- Mission Critical
- Municipal/Public
- Mixed Use
- Hospitality
- Religious
- Retail
- Parking Structures
- Transportation
- Special Structures
- Office Buildings
- Residential
- Education
- Stadiums
- Military

Precast Benefits

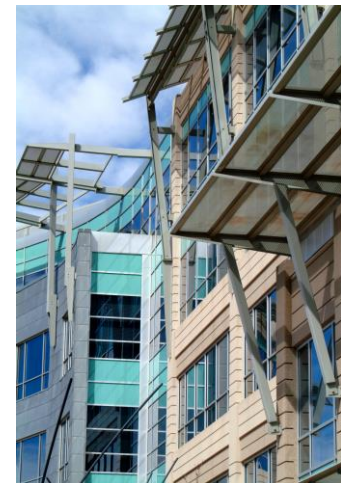
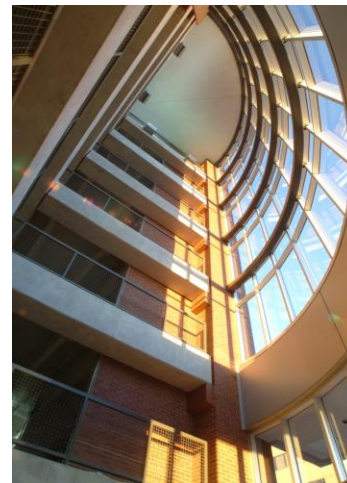
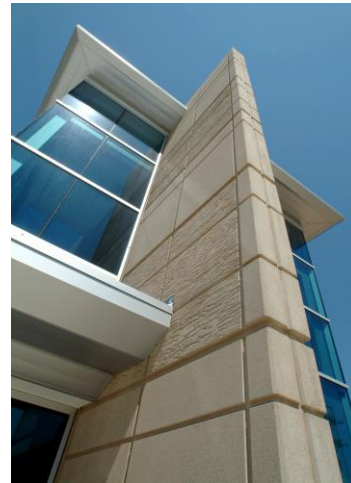
- Dual role structural and architectural features
- Virtually unlimited design options
- Accelerated construction and year round production
- Environmentally friendly with high thermal efficiency retention, less construction waste during production of precast over other systems, and use of recycled materials
- Durability with superior resistance to exposure, soil, impact, mold, mildew, chemicals, and UV radiation
- Long life expectancy and low maintenance and life cycle costs
- Precast components fabricated by PCI certified plants, and production monitored by PCI certified quality control inspectors
- Design creativity and solutions for more efficient structures



Specialized Design

Specializing in the design and detailing of complex architectural and structural precast concrete projects and components, our mission is to make a difference in the build environment one structure at a time. Who we are is defined by what we stand for.

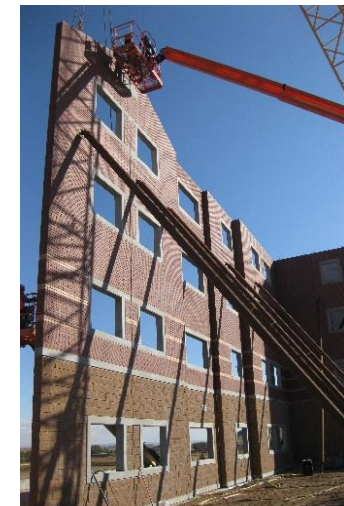
EnCon Design, LLC's design services provide product knowledge of structural engineering and components, precast panel function, structural and architectural considerations, and integrated engineering. Our unique concept and staff expertise allow us to offer a full range of diverse services managed from the initial design stage through building completion. These EOR precast solutions provide product variation and geographical diversification, development of innovative product lines, use of certified precast products, and cutting-edge design techniques.



Our Construction Administration

Site administration service provides safe and effective site management for rigging and equipment needs, from a small job site, to a large industrial site, we possess specialized experience and knowledge required to smooth the construction process, construction issues, and problems that arise during construction. Our designs and plans create details for temporary shoring and bracing processes. They provide clients with maximized project stability and project-site safety.

Construction administration services can save time and money on projects through the use of specialized administrative principles, established safety and building techniques, from pre-construction through project completion. Specialized member and stability analysis of staged construction ensures a detailed evaluation for not only project for foundation stability, but safety throughout the construction process.



Design Culture

To foster an environment of outstanding customer service and responsive communications, technical excellence and quality, multidisciplinary coordination/collaboration, creativity/unique solutions, and a balance between business craft/life/work.

Design Staff Profile

- Specialized project, market, and product knowledge, with over 22 years of structural design experience with technical excellence and quality
- Reduction in cost and time
- Value engineering
- Multi-disciplinary collaboration and coordination
- Coordination of entire design process, including concept drawings, shop drawings, production and erection
- Efficiency created through early project involvement
- Experience across all market segments
- Single source supplier
- Risk minimization

Design Values

- Integrity - To never compromise our core philosophy of delivering safe and efficient structural designs
- Commitment - To serve our clients' needs before our own to the best of our abilities
- Excellence - To strive to achieve our clients' vision by listening intently
- Respect - Respect subjective opinions on design
- Sustainability - To advise our clients about the best construction materials and practices available for healthy and durable structures.

