


Fact Sheet FS007

Structural Plus® Features and Benefits

	ISSUED	REVISION	SHEET TITLE
	9.13		Structural Plus® Features and Benefits
FS007			

Cover

Structural Plus®

When your customer insists on more than plain gray concrete, but doesn't have the budget for an architectural finish, Structural Plus® is your cost-effective solution. Structural Plus® is a value-engineered precast finish solution that can be matched to your project specifications. Stresscon blends gray cement with local aggregates and color pigments to achieve a full color finish. After casting, precast products are sandblasted to achieve final color and texture.

Structural Plus® products are produced to PCI MNL-116 specifications. This finish is a durable, sustainable and economical precast finish option. The versatility of Structural Plus® creates limitless design and project possibilities. Suitable markets include Commercial, Medical, Warehouse, Educational, Judicial, Religious, Military, Data Centers, and Parking Structures.

Structural Plus®:

- For use on solid and insulated wall panels
- R-value, thermal efficiency, and ASHRAE 90.1 requirements can be met with insulated wall panels
- LEED points may be attained through the use of local aggregates and recycled steel
- Interior of precast wall panels can be paint ready
- Architectural features combined with structural benefits reduce the wall thickness and eliminate the need for multiple building systems
- Virtually unlimited design options
- Superior resistance to impact, soil, mold, mildew, chemicals, and UV radiation
- Long service life and low maintenance costs create low life cycle costs
- Structural Plus® products are manufactured in a PCI certified production facility

The concrete mix is available in four color blends including Earl Gray, Light Gray, Strawberry Shake and Honey Wheat. Priced with a small premium above a standard gray mix, this unique color and finish allows for unlimited design possibilities. Structural Plus® colors can be mixed and matched with other Structural Plus® finish colors, or implemented into designs with brick and form liners to produce architecturally aesthetic building options.

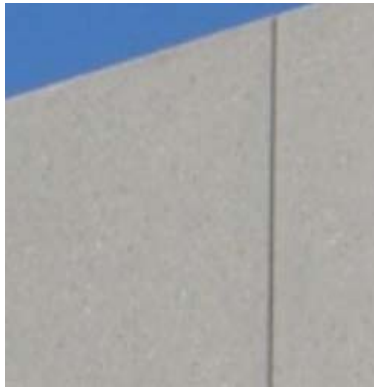
Strawberry
Shake



Honey
Wheat



Light Gray



Earl Gray



Structural Plus® Project Spotlight



Structural Plus® was used for the Falcon High School project, which consists of 318 specialty-engineered insulated wall panels. The cost-benefit analysis concluded that a precast concrete insulated wall panel system offered the best solution for cost, durability, and a maintenance-free building envelope. At a cost of 30% to 35% less than traditional architectural sandblast wall panels, this is an ideal solution given the project's financial constraints.


The architect designed an interesting reveal pattern to create an aesthetically pleasing façade. Light sandblasting minimized the potential color inconsistencies of an unfinished colored concrete and produced the appearance of a natural stone texture. Treated with an acid wash, horizontal bands contrast with the sandblast finish to further enhance the exterior.

For precast project building needs, Structural Plus® is a durable, sustainable and economical precast finish option that allows the opportunity for cost savings in the creation of unlimited project and design options. For more information on Structural Plus® products and finish options, contact our Stresscon team.



ISSUED	REVISION	SHEET TITLE
9.13		Structural Plus® Features and Benefits
FS007		

Copyright © 2013
By EnCon Design, LLC
FS006
09.06.13

 ENCON	ISSUED	REVISION	SHEET TITLE
	8.13		Understanding and Achieving R-Values
	FS007		